

Regal Tower – Commercial (Shell & Core) – Dec 11



Project Brief: Offices & Retail,
3B+G+4P+28+2TC

Property Type: Free Hold

Plot Area: 6,113.38 m²,

BUA: 77,447.69 m²

Escrow Account: 001582430848901
DIB

Next Payment Milestone as Per

RERA: 15% on Completion

Construction Status for this month

- Steel structure installation of top roof sliding door is 100% completed.
- Air lock Skelton & the relevant top glass panels had been installed.
- Edge angles at building elevation have been installed from the top of the roof down to the 26th floor.
- Marble floor at air lock is 100% completed.
- Final wall coat at basement 3 is 100% completed.
- Waterproof & ceramic of 80% of the balconies had been done.
- Sanitary ware up to 20th floor had been installed.



External Façade showing the progress of Cladding



External Façade



Entrance & Lift Lobby at Ground Floor



Aluminum Door for Balcony 20th – 31st Floor



Entrance & Lift Lobby at Ground Floor



Ceramic Work for Arcade Area



Work for High Level Slab



Handrail Fixing for Balcony



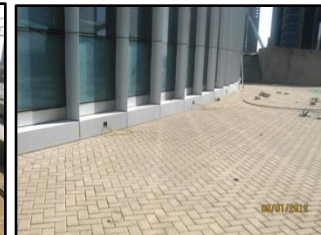
Ceramic Work for Balcony 20th – 31st Floor



Road Marking & Numbering for Parking Area



Irrigation Work for Landscape at 5th Floor



Interlock Work for 5th Floor