

Regal Tower – Commercial (Shell & Core) – Nov 11



Project Brief: Offices & Retail,
3B+G+4P+28+2TC

Property Type: Free Hold

Plot Area: 6,113.38 m²,

BUA: 77,447.69 m²

Escrow Account: 001582430848901 –
DIB

Next Payment Milestone as Per

RERA: 15% on Completion

Construction Status for this month

- Steel structure installation of Top roof sliding door is 100% completed.
- Air lock Skeleton and the relevant top & side glass panels are 100% completed.
- Final wall coat at basement 2 & 3 and 80% of wall & ceiling paint at 5th floor have been completed.
- Waterproof and ceramic of Balconies are 80% completed
- Sanitary ware up to 15th floor had been installed
- Rubber joints and accessories for fan room at Basement 2 & 3 are 100% completed.
- Marble floor at air lock is 100% completed.



External Façade showing the progress of
Cladding



Upper roof external cladding progress



Roof Sliding Door



Reception at Ground Floor



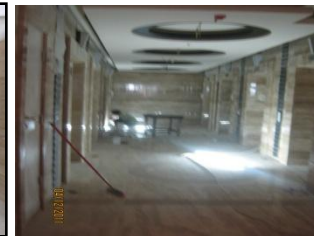
Internal Glass Cladding for the
GF Retail & Cafeteria Areas



Multifunction halls at the
5th floor



False Ceiling at Ground Floor
back entrance



Lift lobby and Corridor at 5th
Floor



Interlock Paving Fixing
at 5th Floor



Epoxy Flooring at Parking Area

